



No part of this publication may be reproduced, stored in a retrieval system, or transmitted in any form or by any means without prior written permission of the Student Technology Center at Saginaw Valley State University.

## Hours

---

Monday 9:30 a.m. – 8:00 p.m.

Tuesday 9:30 a.m. – 8:00 p.m.

Wednesday 9:30 a.m. – 8:00 p.m.

Thursday 9:30 a.m. – 6:00 p.m.

Friday 11 a.m. – 3 p.m.

Saturday closed

Sunday 2:00 p.m. – 8:00 p.m.

## Contact Information

---

techtutor@svsu.edu

(989) 964-2299

Zahnow Library, Z-214

## Adding YouTube video into PowerPoint®

---

This tutorial will help you understand how to navigate around PowerPoint. In many of your classes you will be using PowerPoint and adding a YouTube video to it.

There are several topics covered in this tutorial:

- Opening PowerPoint
- Making a box to place the video
- Changing the URL from YouTube
- Viewing the PowerPoint to view the Video
- Questions?

Hello, Today I am going to show you how insert a *YouTube video into PowerPoint 2007*. First open PowerPoint by going to the *start menu*, and then click on *programs*. When all the programs show up, click on *Microsoft Office 2007*. Next, click on *PowerPoint 2007*.

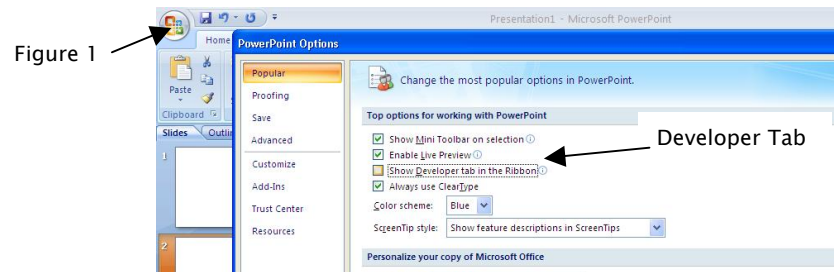
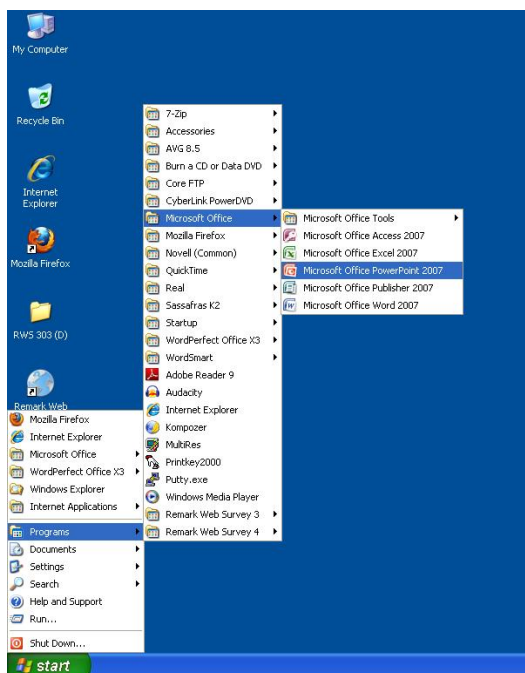


Figure 1

Now, click the *more controls* button on the toolbar (figure 2).

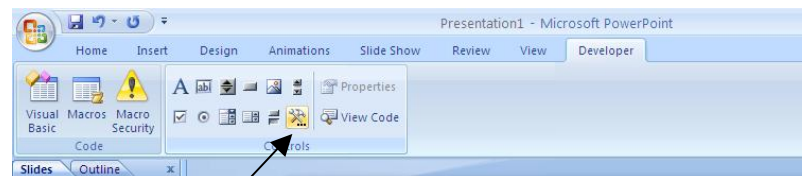


Figure 2

After you click on *more controls*, another screen will come up. On this screen, scroll down until you see *Shockwave Flash Object*. Once you see it, *click on it once* and click *ok*.

Now, *draw a box the size of the slide* for the YouTube video. After the box is drawn, it should have an X through the box.

Once, the X appears, right click in the middle of the box and then click on properties.

After you clicked on properties, a box will appear. In this box, look for *Embed Video* on the left column, where it says *false*, change it to *true* (Figure 3).

Farther down on the same screen, there's an option that says *movie*, also on the left hand side. *Copy the URL* of the video you picked from YouTube, and *paste it* on the left side of the movie option (Figure 4).

Without closing any windows, still looking at the same spot where you placed the URL, now you have to edit the URL a little. Remove the *watch?* And also remove the = and put a / in its place.

In its original form, it should look something like:  
<http://www.youtube.com/watch?v=xz4AVqCZZB4>

With the edited form, it should look something like:  
<http://www.youtube.com/v/xz4AVqCZZB4>

Now, you can view the PowerPoint and the video should automatically play.

If you have any other questions or concerns, please contact us at 989-964-2299 or by e-mail at [techtutor@svsu.edu](mailto:techtutor@svsu.edu). You may also, stop in at anytime to get any additional help with this or any other software you're working on.

