



Hours

Monday 9:30 a.m. – 8:00 p.m.
Tuesday 9:30 a.m. – 8:00 p.m.
Wednesday 9:30 a.m. – 8:00 p.m.
Thursday 9:30 a.m. – 6:00 p.m.
Friday 11:00 a.m. - 3:00 p.m.
Saturday closed
Sunday 2:00 p.m. – 8:00 p.m.

Contact Information

techtutor@svsu.edu
(989) 964-2299
Zahnow Library, Z-214

© 2008 Saginaw Valley State University. All rights reserved.

No part of this publication may be reproduced, stored in a retrieval system, or transmitted in any form or by any means without prior written permission of the Student Technology Center at Saginaw Valley State University.

This tutorial was originally created in 2008 by Nancy Collison, A Professional and Technical Writing major at Saginaw Valley State University.

Adobe Dreamweaver CS3®: The Basics

The Adobe® Dreamweaver® CS3 Basics tutorial is designed to assist students interested in producing a website. It provides a foundation that can be used as a completed project or expanded with future work. This tutorial shows text descriptions as well as screen sample pictures and menu examples that will aid in training and reference with the following:

- Opening a New Document
 - Creating a new document
 - Saving your document
 - Titling your document
- Designing Page Features
 - Editing text
 - Insert a table
 - Inserting an image
- Changing Page Properties
 - Editing colors
 - Linking pages

Dreamweaver Basics

The Adobe® Dreamweaver® CS3 Basics tutorial is designed to assist in producing a website.

For information on site setup, refer to the STC tutorial Getting Started with Dreamweaver® CS3.

Setting Up

Setting up a Website Folder

In order to stay organized and avoid broken links, a folder containing your website files should be set up on either your C: or M: drive. If you have not already set up a folder, do so before you begin.

1. Click on the menu: **File > New Folder**.
Name your folder 'Website' or another appropriate name.

Opening a New Document in Adobe® Dreamweaver® CS3.

1. From the Start menu: select **All Programs > Adobe Master Collection CS3 > Adobe Dreamweaver CS3**. This will launch the application.

Creating a New Document

There are different methods of setting up a document. For this tutorial we will use a predetermined layout/template (See Figure 1.).

1. **File > New > Blank Page > Page Type > HTML > Layout > Column fixed, left sidebar, header and footer > Create**.

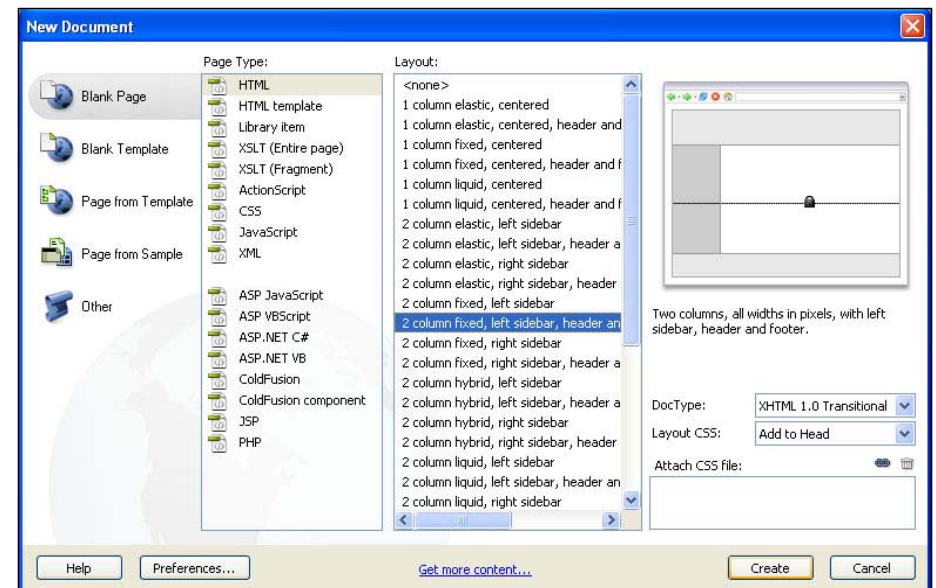


Figure 1. New Document

Saving your Document

The main page must be named index.html in order to be viewed in the browser.

1. **File > Save As > index.html.**

Titling Your Document



In the bar at the top of your document, choose a title for your website.

1. Title: My Website (See Figure 2.).

Designing Page Features

The content and appearance of your pages can be displayed in many ways. Choose colors, font sizes, styles and other attributes with your audience in mind (See Figure 2.).

Editing Text

1. Select existing Header text. Delete.
Type new text: your name. You may also choose to use the title of your website or text you feel is appropriate for your audience.
2. Select: White or #FFFFFF from the properties menu at the bottom. These are the color and websafe numbers. 
3. Select 'Main Content' text. In the Properties menu select: Red or #FF0000. 
4. Repeat with: 'H2 level heading'. Select Text. Properties menu select: Red or #FF0000.
5. Select existing Footer text in the bottom cell. Delete. Type new text: your email address or your choice of text.

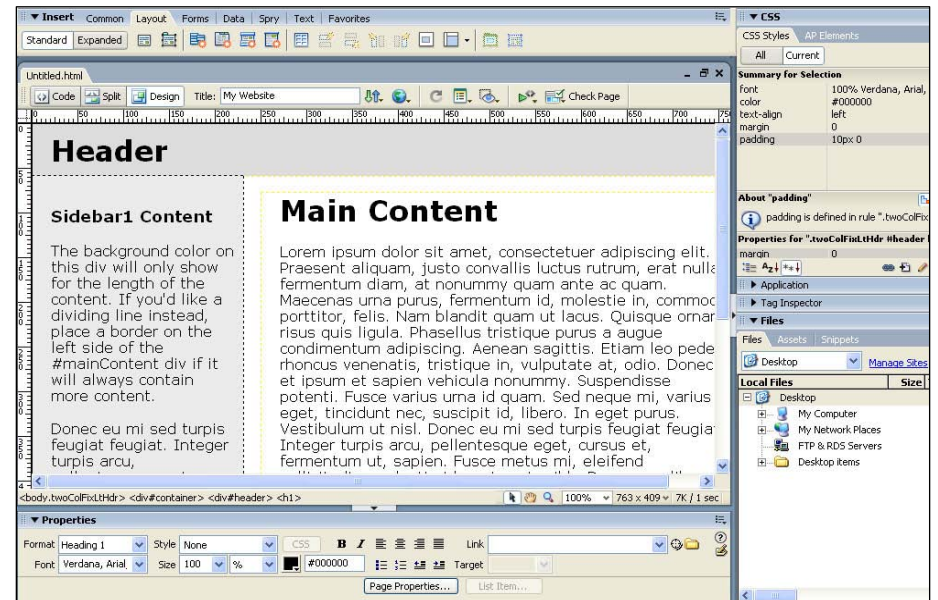

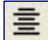



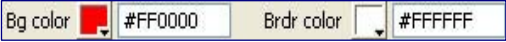

Figure 2. Editing Content

Centering Text

1. To center your footer text: Select your text > Click > **Align Center** from the Properties menu or right click > **Align > Center**. 
2. Reselect Header Text > (your name).
3. Click > **Align Center** from the bottom properties menu or right click > **Align > Center**. 

Inserting a Table

Tables can be used throughout your website for different uses. For this tutorial, we will use a table to create menu buttons (See Figure 3.).

1. Select and delete the text in the left sidebar before the next step (sidebar | content). Select text: Delete. 
2. Click from the top **Insert** menu > **Table**.
3. Choose: Rows: 3. Columns: 1. Table width: 150. Border: 1. Cell padding: 1. Cell spacing: 1. Header: None > **OK**.
4. Select Table Border (red frame will appear). **Align > Center**.
5. Click inside the top cell. Type 'Home'. 2nd Cell: type 'Page 1'. 3rd Cell: type 'Page 2'.
6. Select the Table Border. In the Properties Menu choose: **Bg color**. Click the box and select Red or #FF0000. For Brdr color select White or #FFFFFF. 
7. Select Text inside cell > Properties Menu > '**B**' > Click Box > Select White or #FFFFFF. 

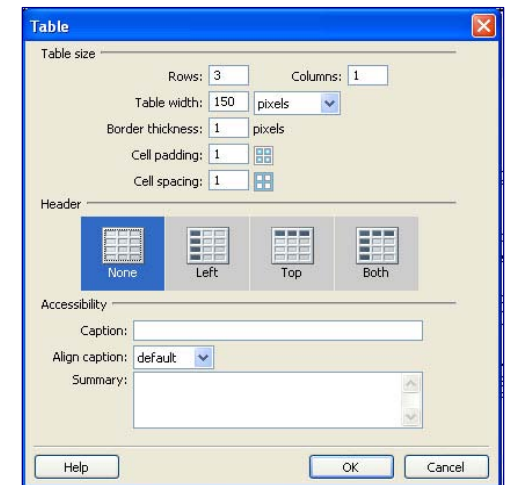



Figure 3. Tables

Inserting an Image

1. Click in the Left Sidebar of your document.
2. Select from the top **Insert** menu > **Image** 
3. Locate the folder in the Drop Down Menu > **Look in** > Select Image (jpg or giff format) > **OK**.

See *Photoshop Basics Tutorial* for additional information on file formats suitable for website use.

4. Type Alternate Text > Long Description if desired.
5. Hold the shift key down as you resize the image.

Changing Page Properties

Page properties involve appearance as well as functionality. The colors of the background outside of your pages as well as the rollover and visited link appearance must be determined (See Figures 4. and 5.).

Changing Page Background Color

1. In Properties menu > **Page Properties** > **Appearance** > **Background Color** > Select Red or #FF0000 > **OK** (See Figure 4.).

Changing Link Colors

1. In Properties menu > **Page Properties** > **Links** > **Link Color** > select White or #FFFFFF > **Visited links** > select Burgundy or #990000 > **Rollover links** > select Gray or #999999 > **Active links** > select White or #FFFFFF > **OK** (See Figure 5.).

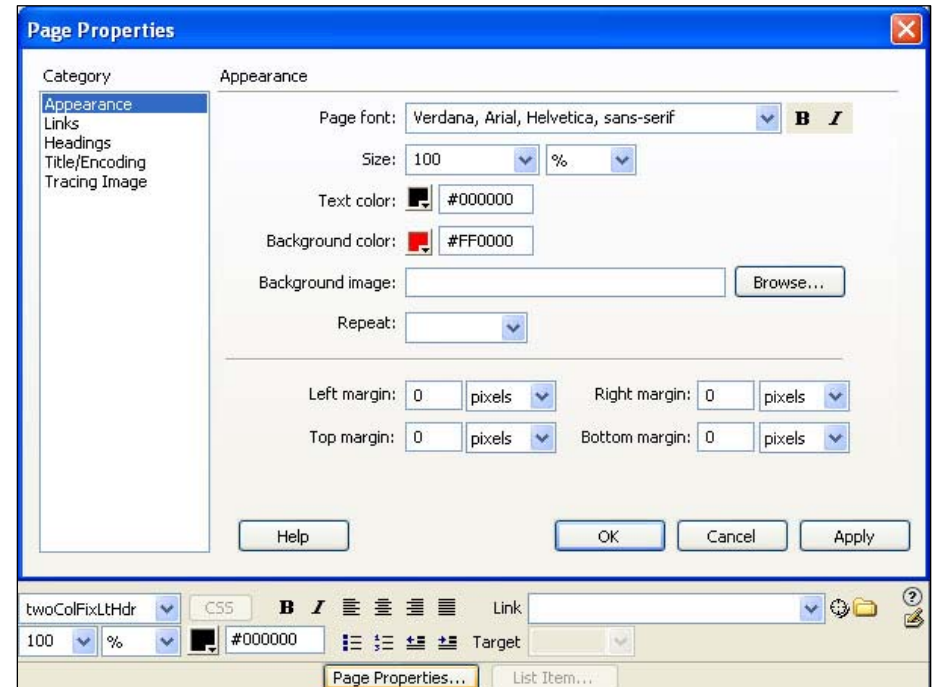


Figure 4. Page Properties



Figure 5. Link Colors

Changing Cell Background Color

1. Select Header Cell (box around your name), a red outline will appear.
2. In Properties menu > **Edit CSS** > In CSS menu > **Current** > Double click Background. Category: **Background**. Select Background color: Red or #FF0000 > **OK**



Figure 6. Setting up Links

Saving Your Document

1. Windows Menu > **Save**

Duplicating Pages

1. Windows Menu > **Save As**. Choose the name of another one of your menu pages. This will duplicate the same page to use for your links.

Setting up Links

1. Highlight text in your menu. In the Properties menu locate the box called Link. Browse the folder to the right to locate the file you wish to link to your text (See Figure 6.).
2. Repeat this step until all links are set.

Make sure you set up the same links in your other pages to this website.

Checking Your Site

You can preview this page in available browsers to check compatibility.

1. **File > Preview in Browser** > select your browser choice (See Figure 7.).

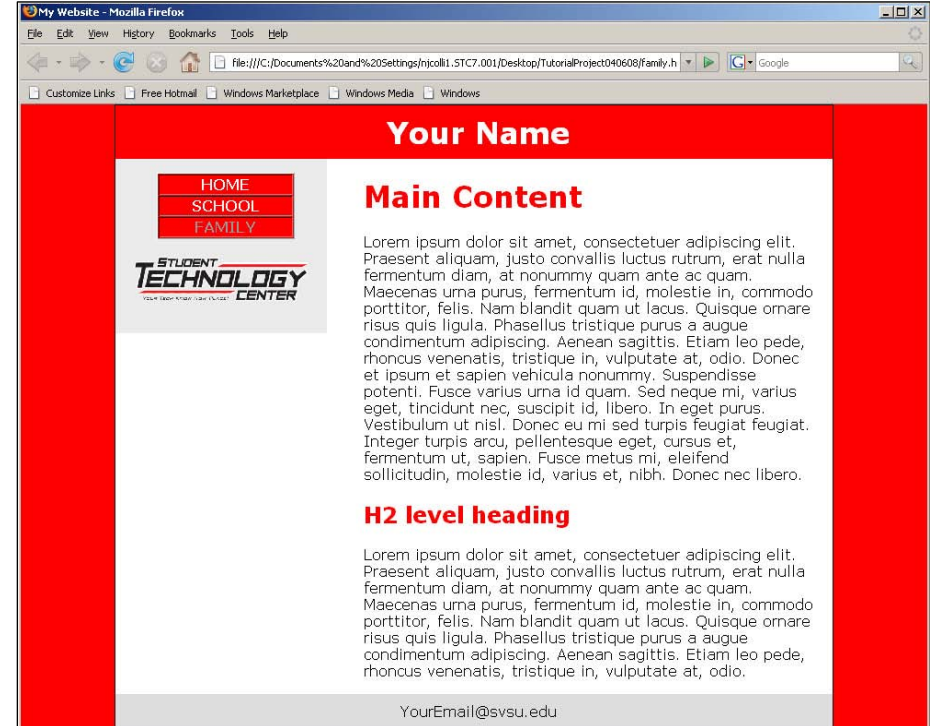


Figure 7. Browser Preview